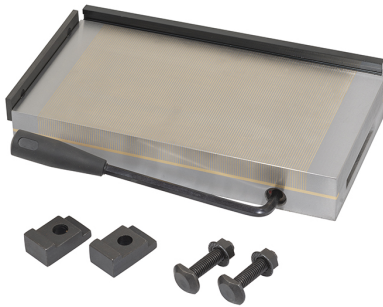


WITH FIXED POLARITY. IT ALLOWS THE MACHINING OF SMALL AND LOW THICKNESS PIECES DUE TO FINE PITCH.



Dimensions	250 x 150 x 48 mm
Magnetic force	120 N/cm ²
Pole pitch	0,5 + 1,5 mm
Net weight	16 kg
Gross weight	16,00 kg
Packaging dimensions	315x225x125 h mm
EAN Code	8012667386689



Wooden Box



Steel