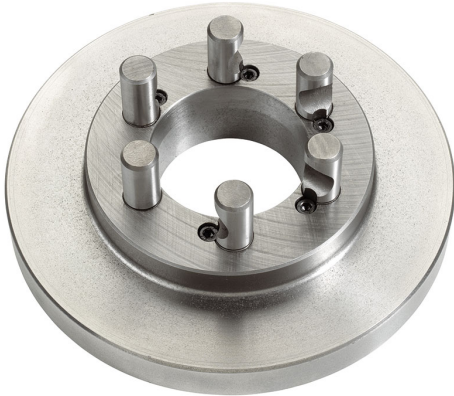


CAMLOCK DIN 55029 TO SHORT CONE WITH RAW SPINDLE SIDE.



| | |
|-----------------------------|-----------------|
| Cam lock Type | 11" |
| Size | Ø 320 mm |
| Thickness | 45 mm |
| Pins | Ø 30 mm |
| Packaging dimensions | 340x340x70 h mm |
| Gross weight | 18,25 kg |
| EAN Code | 8012667312770 |



Box



Cast Iron



Wooden Box