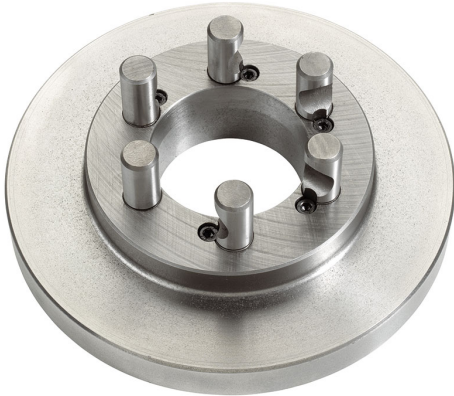


CAMLOCK DIN 55029 TO SHORT CONE WITH RAW SPINDLE SIDE.



<b>Cam lock Type</b>	8"
<b>Size</b>	Ø 250 mm
<b>Thickness</b>	30 mm
<b>Pins</b>	Ø 25,4 mm
<b>Packaging dimensions</b>	290x275x60 h mm
<b>Gross weight</b>	10,13 kg
<b>EAN Code</b>	8012667312756



Box



Cast Iron



Wooden Box