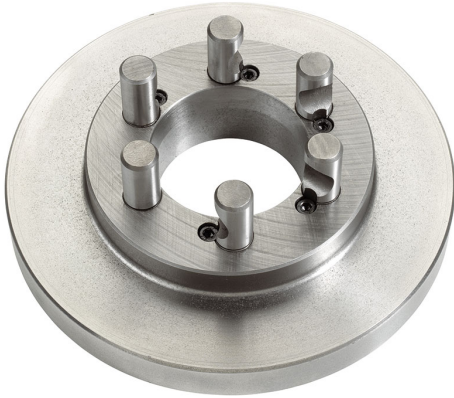


CAMLOCK DIN 55029 TO SHORT CONE WITH RAW SPINDLE SIDE.



Cam lock Type	6"
Size	Ø 250 mm
Thickness	30 mm
Pins	Ø 22 mm
Packaging dimensions	290x270x60 h mm
Gross weight	11,04 kg
EAN Code	8012667238919



Box



Cast Iron



Wooden Box